

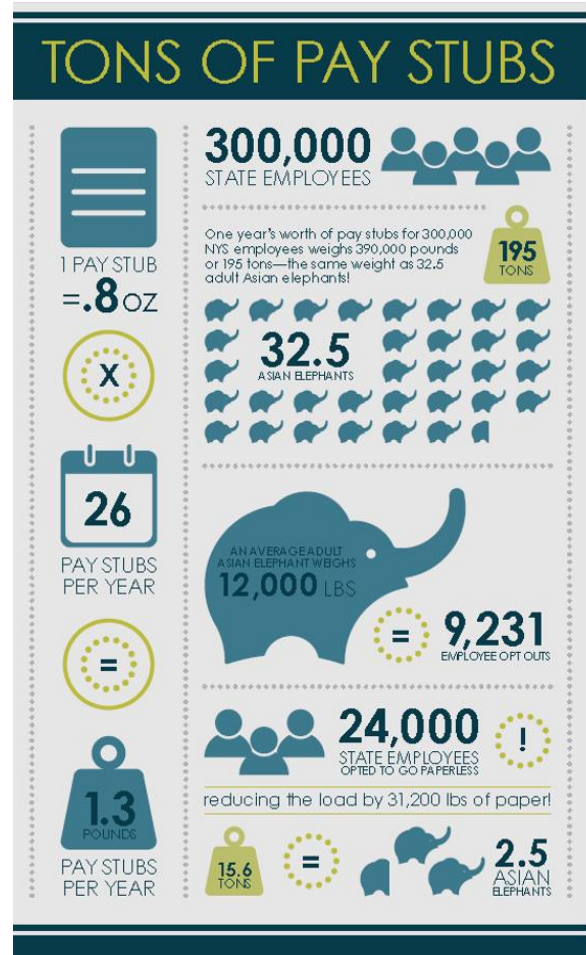
A Mountain of Pay Stubs

At about 0.8 ounces a pay stub may seem insubstantial, but pay stubs are issued 26 times a year. For one employee, a year's worth of pay stubs weighs about 20.8 ounces, or 1.3 pounds. No big deal, right? However, for the entire New York State workforce—about 300,000 employees—a year's worth of pay stubs weighs 390,000 pounds, or 195 tons! That's the weight of about 32.5 adult Asian elephants.

How can you help lighten this load of pay stubs? If you haven't done so already, choose to [Go Paperless](#) and opt out of receiving printed pay stubs. If you have opted out, you can help by encouraging your coworkers to do the same. So far, over 24,000 New York State employees have chosen to go paperless, which has lightened the load of pay stubs by 31,200 pounds. That's the weight of 24 brown bears, which is great, but there are still a lot of pay stubs being printed.

Check out the number of employee opt outs needed to lighten this load of pay stubs by the weight of some large animals:

- 1,000 = Brown Bear (1,300 lbs)
- 1,693 = Clydesdale Horse (2,200 lbs)
- 3,924 = White Rhinoceros (5,100 lbs)
- 9,231 = Asian Elephant (12,000 lbs)
- 50,770 = Humpback Whale (66,000 lbs)
- 230,770 = Blue Whale (300,000 lbs)



TONS OF PAY STUBS



1 PAY STUB
=.8 OZ



PAY STUBS
PER YEAR



PAY STUBS
PER YEAR

300,000
STATE EMPLOYEES



One year's worth of pay stubs for 300,000
NYS employees weighs 390,000 pounds
or 195 tons—the same weight as 32.5
adult Asian elephants!



32.5
ASIAN ELEPHANTS



= **9,231**
EMPLOYEE OPT OUTS



24,000
STATE EMPLOYEES
OPTED TO GO PAPERLESS



reducing the load by 31,200 lbs of paper!



2.5
ASIAN
ELEPHANTS